

Traffic & Parking

Families are encouraged to use the drive-thru in the joint VTT-BI parkade for drop-off and pick-up. It is safe, efficient, convenient--and time saving!

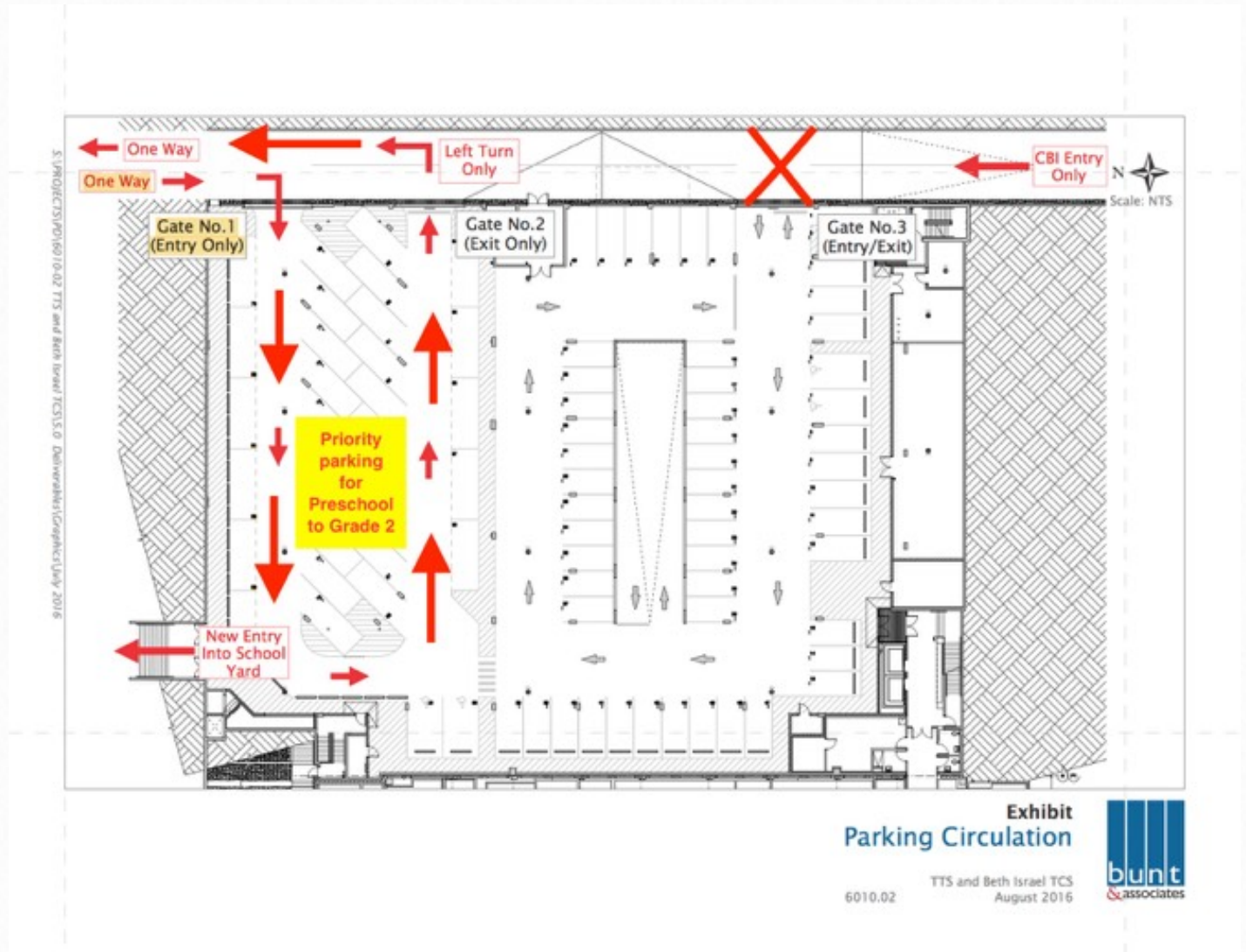


As a destination school attracting families from across Greater Vancouver, getting to and from our school safely and in an orderly manner is of paramount importance. Please read the instructions on the following pages carefully to ensure your child--and every other VTT student--benefits from the careful and considerate conduct of each and every parent and adult in our school community. There are specific rules regarding drop-off, pick-up and neighbourhood parking that **MUST** be followed. **These rules apply to every drop-off and pick-up--NO EXCEPTIONS!**

STOP!
The parkade is a high traffic area with many kids on foot. Drivers are asked to turn off phones, turn radios down, and keep pets in the back to ensure a safe environment for all concerned.
Distracted driving is dangerous!

JOINT VTT-BI PARKADE

The VTT-BI Joint Parkade opened in the fall of 2015. It is located off 28th Avenue underneath Congregation Beth Israel. This is the safest and most efficient method to drop off your children in the morning and pick them up in the afternoon. We strongly encourage ALL FAMILIES to use the parkade.



ENTERING THE PARKADE

The only way to safely and efficiently enter the parkade is from 26th Avenue. That is, all cars must enter the parkade from 26th Avenue (heading east or west) and then make an immediate right turn into the parkade (Gate #1). **NEVER enter the parkade from 28th Avenue.**

Once in the parkade, you have two choices:

The easiest, quickest and most efficient drop-off method is to pull up to the curb and let your children out through the passenger side door. We **strongly encourage** families with children in **Grades 1-7** to use this method as there are not enough spaces

for everyone to park in the parkade. Our traffic team will assist your children out of their cars and ensure they safely enter the school. Students as young as Senior Kindergarten are capable of getting themselves into the school.

If you are planning to park—**and spaces are limited**—**only** park in spaces on P1 and P2 marked as VTT ONLY. The angled parking on P1 is reserved for families with babies and young children. Everyone else should use the drive-thru.

EXITING THE PARKADE

There is ONLY ONE EXIT DOOR. That is Gate #2 in the middle of the parkade. Follow the signs and arrows directing you to Gate #2.

Once you exit the parkade, you MUST TURN LEFT and head towards 26th Avenue. Upon exiting the parkade, **you can only turn RIGHT on to 26th Avenue.**

OAK STREET IS DANGEROUS

Students must never be picked up or dropped off on Oak Street. Traffic is brisk and congested along Oak Street. **During morning and afternoon rush hours, there is no stopping on Oak Street so please do not pull over to drop off your children.**

During early dismissal Fridays, please do not park along the east side of Oak Street as this severely impedes the flow of traffic.

DO NOT CROSS OAK STREET

Students who walk or take the southbound Oak Street bus should NOT cross Oak Street at West 26th Avenue. They should only cross with the traffic signal at West King Edward Avenue or Nanton/28th Avenue.

Tips for a safe and efficient parkade drive-thru experience:

- ✓ In the morning, arrive a little earlier. The parkade is quiet just before 8:15 a.m. Arriving a little bit before allows you quick entry and exit.
- ✓ In the afternoon, arrive a little later. School is dismissed at 3:20 p.m. By the time students collect their belongings, say goodbye to their friends, and make their way to the parkade, it is almost 3:30 p.m. By arriving later, you reduce the amount of congestion in the parkade. The traffic team is on site until 3:45 p.m.
- ✓ Listen to the traffic team. They know what they are doing. They also want to keep everyone safe and keep the traffic flowing. Please respect their directions.

NEVER LEAVE YOUR VEHICLE

Never leave your vehicle unattended in the drive-thru. A smooth and efficient traffic operation relies on parents staying in their vehicles and proceeding when directed by our traffic team.

VTT SUPPORTS CARPOOLING!

To ease both the traffic and time burden, contact Jennifer Shecter-Balin (info@talmudtorah.com) for help in finding carpooling partners.

WHERE TO PARK IN THE PARKADE

We encourage our families—whenever possible—to use the parkade drive-thru and avoid parking in stalls as spaces are limited. Should one choose to park their vehicle, **do NOT park in any spaces marked SYNAGOGUE PARKING, RESERVED OR STAFF PARKING**. The playground doors to the parkade will lock at 8:45 a.m. every morning. Please ensure you return to your vehicle by that time. **If you are volunteering in the school and using the parkade, please register your vehicle and plate with our security team and report to the office to sign in and receive a visitors' pass.**

PARKADE AND DRIVE-THRU HOURS

The traffic team manages traffic in the parkade and drive-thru in the mornings from 8:00 a.m. to 8:45 a.m. and in the afternoons from 2:45 p.m. to 3:45 p.m. If parents are using the drive-thru, and have arrived early, they **MUST REMAIN IN THEIR VEHICLES AT ALL TIMES**. After 3:45 p.m., parents will need to come to the front office at 26th Avenue to pick up their children. However, for students enrolled in after school programs, the program vendor will communicate pick-up instructions with you.

PARKING IN FRONT OF THE MAIN OFFICE ON 26th AVENUE

Parking in front of the main office is prohibited at all times as it is the fire access to the school. Please do not block this space, even for a short period of time.

STOPPING ON 26th AVENUE

City of Vancouver by-laws prohibit vehicles from stopping anywhere on Oak Street, even for a minute. **DO NOT STOP on Oak Street EVER!** If you need to drop off your child, proceed to the parkade and use the drive-thru lane there.

KING EDWARD MALL/SAFEWAY PARKING LOT

Since the joint VTT-BI parkade opened in 2015, VTT no longer has a parking agreement with Safeway for use of their lot. Should one choose to park in the Safeway lot as opposed to the VTT-BI joint parkade, doing so is at one's own risk and peril. VTT will not accept responsibility for ticketing or towing of community members' vehicles in the Safeway lot. **VTT parents do NOT have Safeway parking lot privileges. The parking lot has a "no walk off" policy.**

VTT BUS TO THE JCC

With congestion along Oak Street increasing and with an eye toward environmental stewardship, VTT's bus service aims to make the after school commute to the JCC as convenient and worry-free as possible.

★Cost per ride is only \$2.00 (heavily subsidized service)

★Bus departs VTT at 3:35 p.m. SHARP!

School bus service starts the afternoon of **Wednesday, September 4th**, with seats allocated on a first-come, first-serve basis, with priority going to students registered in Club J.

BUS RULES

If the student will not ride the bus as scheduled, **the school office must be notified by email ONLY (office@talmudtorah.com) no later than 12:00 noon on the day of travel.** A ride will be considered cancelled only when a confirmation email from the office is sent to the parent.

VANCOUVER TALMUD TORAH RESERVES THE RIGHT TO CANCEL BUS SERVICE IF RULES ARE NOT FOLLOWED. If your child is a bus rider, please review these rules with them, taking particular note of the quiet, seated decorum required. **Failure to follow bus protocols may result in suspension of service for the remainder of the school year.**

GENERAL SCHOOL BUS RULES

1. All students **must remain seated** and behave appropriately.
2. Students cannot save seats for friends. The driver and/or bus assistant reserves the right to assign seats.
3. All students must sit straight ahead in their seats (never standing while bus is in motion), with knees in front and hips squarely on the bench.
4. If a student opens a window it should be closed upon leaving the bus.
5. Students must not put any body part out the window or throw anything out the window.
6. Voice levels must be at an absolute minimum in order for the driver to concentrate on driving and safety. **There will be no shouting and screaming at any time.**
7. When the driver or assistant speaks, students are to remain quiet until his/her message has been conveyed.
8. **No eating or drinking** is allowed on the bus at any time.
9. No garbage is to be left on the floor or in between the seats. Students are to use the garbage bin at the front of the bus when exiting.
10. Students not following these rules will have bus privileges suspended.

These rules concern SAFETY and are to be adhered to at all times.

VTT supports carpooling! For assistance finding compatible families, email info@talmudtorah.com

